

Even the smallest WiFi issue can become a huge headache for your most critical processes if you lack visibility into the problem and do not tackle it quickly.

But what if your system recognized and notified your IT department of network abnormalities before they turned into problems – and recommended solutions automatically?



**WIP'S FEATURES:**

- ▶ Save up to 90% in Mean-Time-to-Resolution
- ▶ Reduce WiFi problem tickets by more than 70%
- ▶ Reduce remote site visits by up to 80%

**AUTONOMIC WIFI ASSURANCE**

- ▶ Capture and analyze data
- ▶ Automatically produce actionable intelligence using Artificial Intelligence
- ▶ Support for WiFi 6 (802.11ax) technology

**SYNTHETIC NETWORK TESTING**

- ▶ Suite of 10 Network Tests runs over Wired and Wireless Networks
- ▶ Remotely diagnose and troubleshoot
- ▶ Copy tests across locations and SSIDs

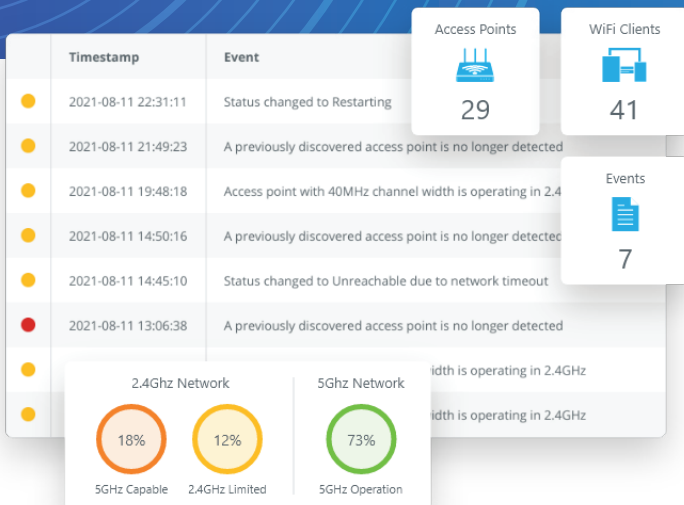
**CLIENT DEVICE FORENSICS**

- ▶ Data collected 24/7
- ▶ Review historical data on user interface
- ▶ Classification of APs and Clients via device fingerprinting

**VENDOR AGNOSTIC AND API SUPPORT**

Because WIP is Vendor Agnostic and gives an unbiased view, all features benefit from WIP's easy to use seamless integration with the existing network infrastructure. The result is future-proofing against the ever changing wireless technology and explosion of IoT devices. With WIP's API support, customers can integrate WIP's data, including test results, into their end user dashboard for one management platform.

- ▶ Complete Wireless Ecosystem Visibility
- ▶ Historical Analytics
- ▶ Automated Detection, Notification & Mitigation
- ▶ Security Breach Detection
- ▶ Vendor Agnostic
- ▶ Remote Network Test Suite
- ▶ Export Data, Reporting and Logging



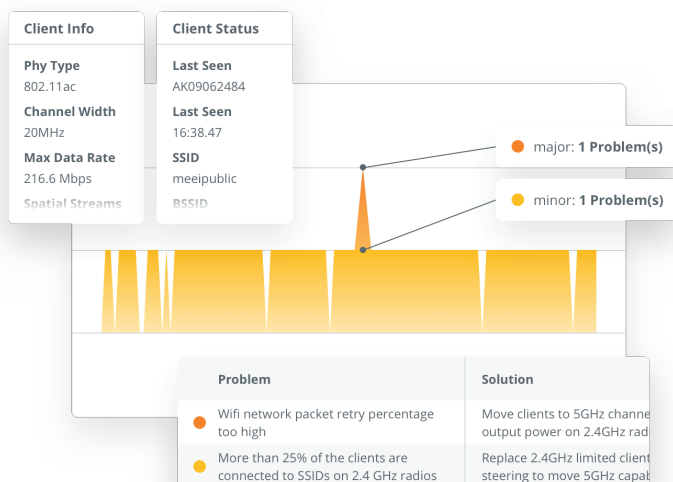
That's what The Wireless Intelligence Platform™ (WIP) is all about: advanced wireless optimization algorithms work alongside next-generation predictive analytics to keep your WiFi network up and running reliably and efficiently. Our unique combination of on-premise sensor hardware and cloud-based, patented software is vendor agnostic, and seamlessly integrates with any current network infrastructure. We eliminate small problems before they become big problems.

## IMPROVED OPERATIONAL EFFICIENCY

WIP knows what you need – solutions – and what you don't – complications and mysteries. The platform drills down into every WiFi abnormality, delivering root cause identification and actionable insights with each real-time alert. Experience improved network performance, reliability, and security thanks to its proactive 24/7 detection, notification, mitigation, and complete ecosystem visibility.

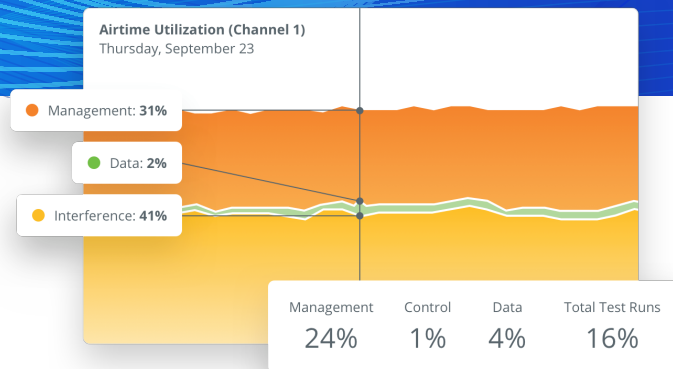
## PERSONALIZED SUPPORT

Your network has unique demands and challenges. WIP's AI-engine uses behavioral profiling and device pattern recognition to learn to recognize your network's expected behavior – and then provides real-time alerts with root cause identification and actionable resolutions if that behavior changes in any way.



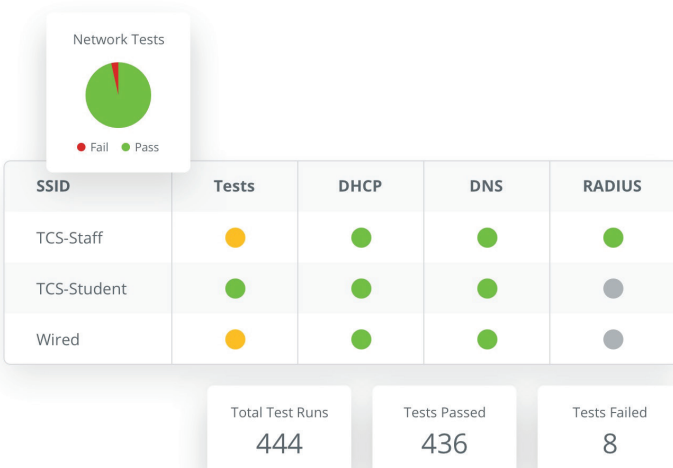
## SECURITY BREACH DETECTION

WIP automatically detects & classifies all APs as Mine, Known, Unknown, or Unauthorized. The platform sends instant alert notifications for any detected Unknown or Unauthorized APs, denial of service attacks, and at the detection of any vulnerable points of entry.



## AUTOMATIC BUSINESS ANALYTICS

Sometimes it feels like business analytics make the world go round, so we made sure to make them as easy to read and share as possible. WIP provides API and SNMPv2c support; and allows you to export all tables and graphs from the user interface, making it simple to support your decisions with real-time and historical trends



## FUTURE-PROOFED NETWORK PLANNING

We can't overhype the importance of historical analytics. WIP automatically saves historical data, including identified problems and resolutions, and creates graphs that display health and performance trends over time. With this data, you always have the best insights needed when it comes to reviewing intermittent issues and making future budget and capacity decisions.



AI-DRIVEN WIFI AUTOMATION IS THE EASIEST WAY TO PROACTIVELY ELIMINATE WIFI PERFORMANCE ISSUES TO KEEP YOUR BUSINESS UP AND RUNNING.